



## Audi S3 8Y FMDV32 FITTING INSTRUCTIONS



Please thoroughly read through and familiarise yourself with these instructions in their entirety prior to beginning any part of the installation process of any component. Please also ensure the vehicle and engine has cooled down sufficiently to avoid risking possible skin burns or other injury.

### **TOOLS NEEDED:**

T25 Torx driver  
Flat blade screwdriver  
Side cutters

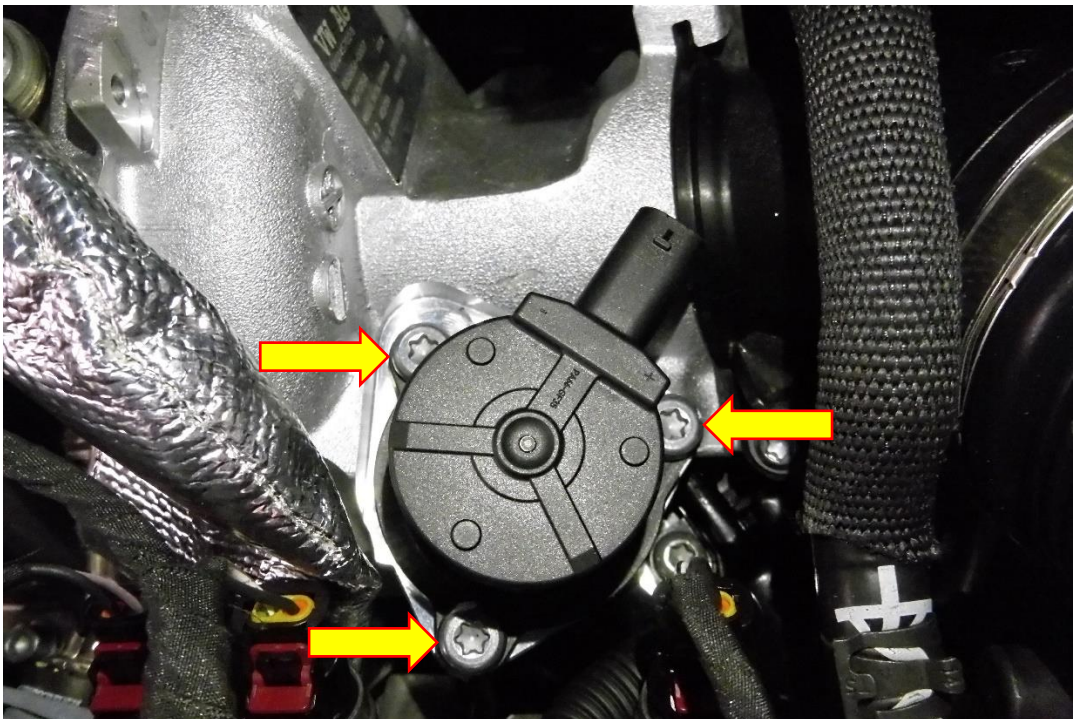
1. Open the bonnet of the vehicle, then remove the engine cover by pulling sharply in an upwards motion.



2. With the engine cover removed locate the original diverter valve. This is located on the boost pipe at the lower front of the engine.



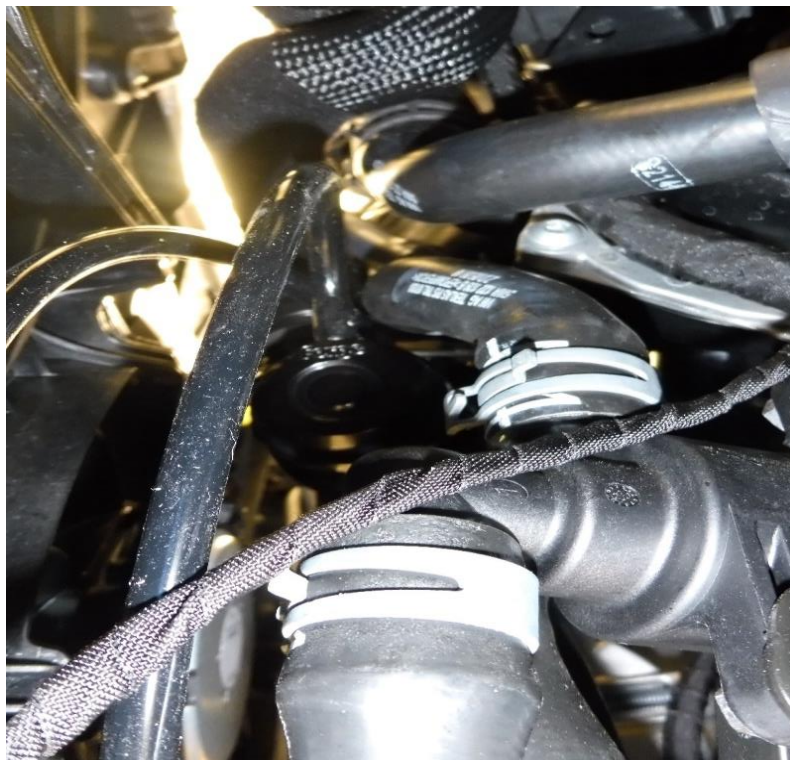
3. On the OE valve push back the red retaining clip to allow you to remove the wiring loom. Remove the three T25 Torx fasteners attaching the OE valve to the boost pipe, the OE valve will now come away.



4. Before fitting the Forge valve place the supplied O-rings into the grooves on the mounting surface of the valve, as shown in the picture below.



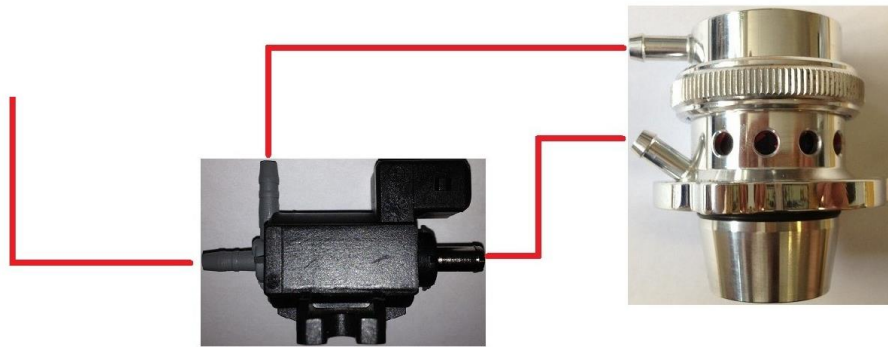
5. Take the Forge Motorsport valve and mount it into position where the OE valve used to be. Use the original T25 Torx fasteners to secure it in place.



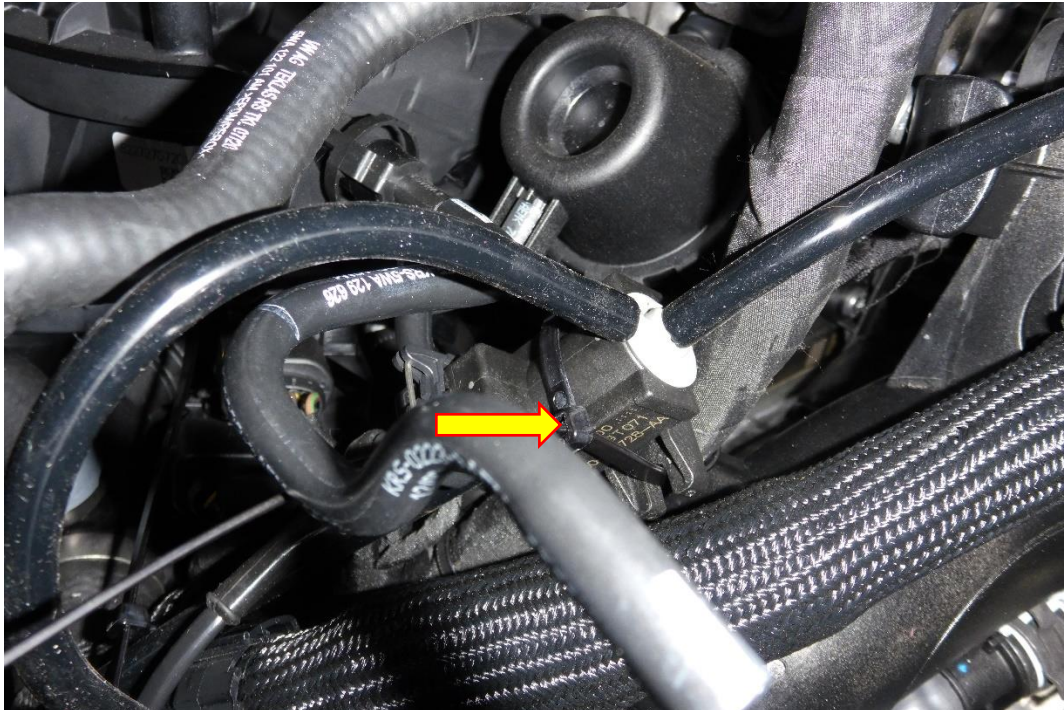
6. The next set of pictures are for illustration purposes - they may not be representative of your engine, but they are the clearest way to show you how to connect your solenoid to the atmospheric or recirculating valve you have fitted. Use the supplied silicone hose to do this, use a sharp knife or side cutters to cut the hose to length.

### Overview of the vacuum hose routing

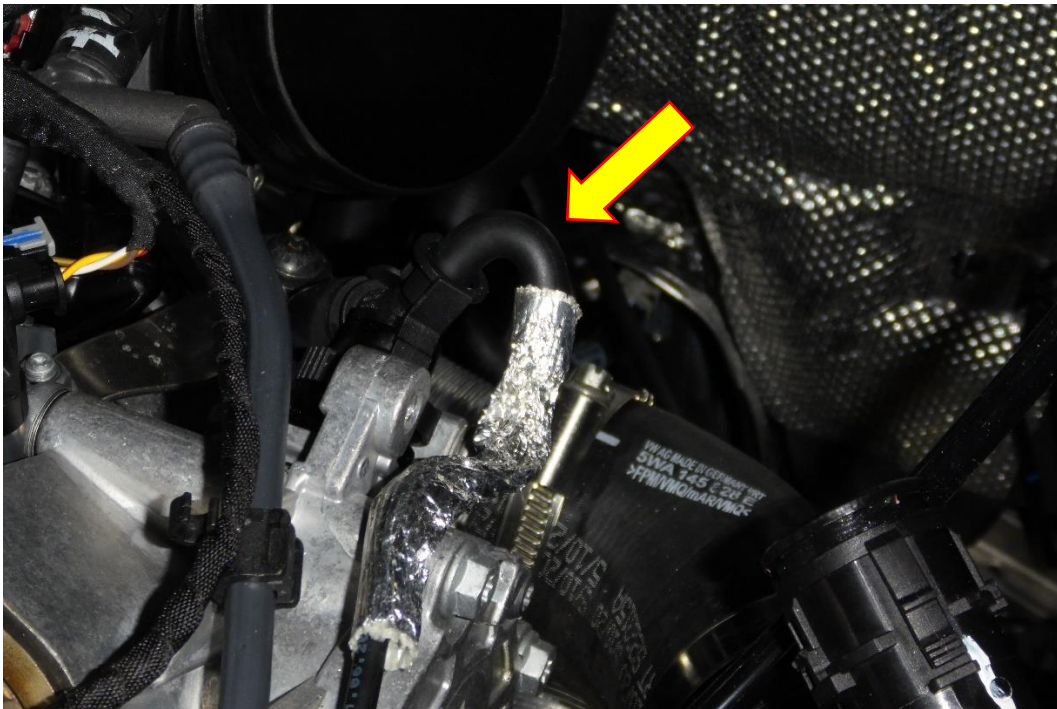
T piece to vacuum pump.



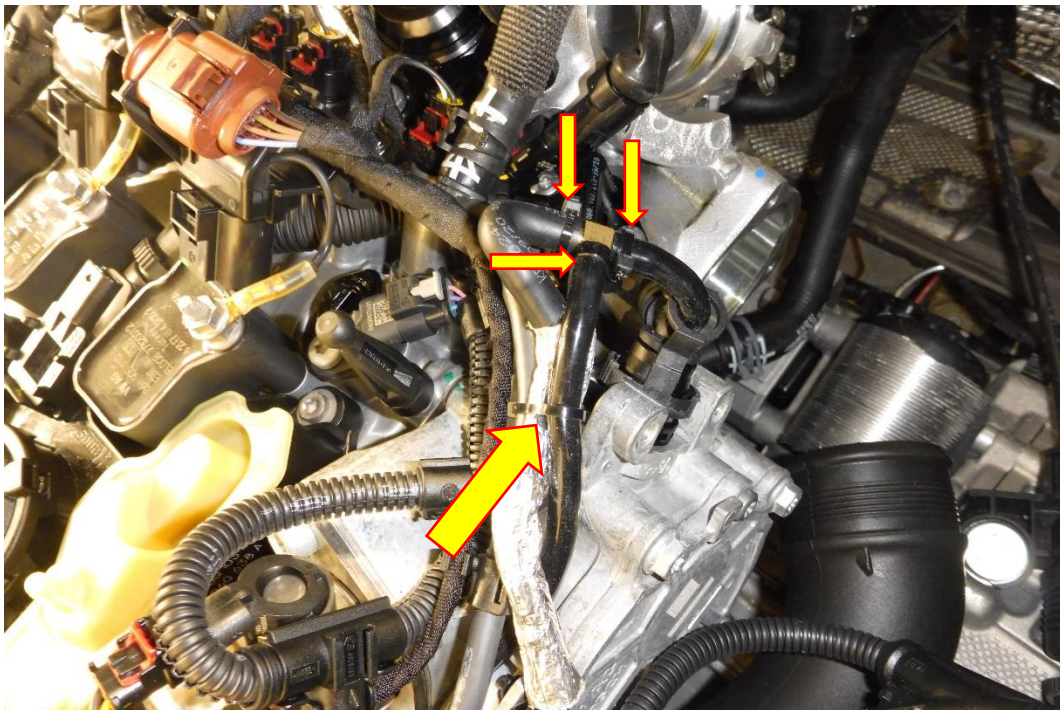
7. Take the solenoid and large cable tie provided and secure it to the large wiring loom next to the airbox vacuum pipe. Take the wiring loom supplied in the kit and connect it to the solenoid and the other end to the loom which was attached to the OE valve.



8. The vacuum source in the engine bay is next to where the solenoid has been fitted. Pull the vacuum pipe away from the plastic joiner.



9. Using the supplied brass T piece and silicone pipe attach it to the vacuum pipe removed in the previous step just like it is in the picture below. Use the provided cable ties to secure the hose as shown with the arrows in the picture below.



10. Finally, re-fit the engine cover to complete the installation. Take your vehicle for a test drive and enjoy your new Forge Motorsport product.

**Forge Motorsport accept no liability for invalidation of your manufacturer's warranty or failure of any component or part due to incorrect installation of Forge Motorsport products.**